



G3 Glaze

Gloss Enhancer



**G3
GLAZE**
GLOSS
ENHANCER

Product Description

G3 Glaze Gloss Enhancer is a protective product with excellent filling capabilities for minor scratches and swirls. Leaving extra shine and a protective layer on the surface, it offers a water repellent yet breathable and durable coating on all paint systems.

G3 Glaze is ideally applied using a Farécla G Mop Finishing Foam, which was engineered in tandem with the liquid to provide optimum performance.



Product Information

Size	Code	Ctn Qty
500ml	G3G501	12
1 ltr	G3G101	6
1 US gallon	G3G118	2

Key Benefits

- Rapidly Enhanced Gloss** Provides added shine quickly with no need to re-apply, saving time and money
- Excellent Filling Capabilities** Helps eliminate minor swirls and holograms from all paint systems to ensure a flawless finish
- Protective Properties** Provides a durable, water-repellent barrier that allows fresh paint to breathe
- Colour Restoration** Restores the lustre to faded paintwork for ultimate customer satisfaction



Use With

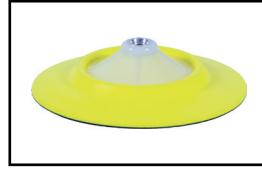
Primary Applicator



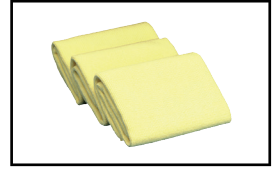
G Mop Finishing Foam
GMF301 (3" / 75mm)
GMF601 (6" / 150mm)
GMF801 (8" / 220mm)



G Mop Back Plate with
white interface for 6" Pads
BPI601 (14mm thread)
BPI606 (16mm thread)
BPI612 (5/8" thread)

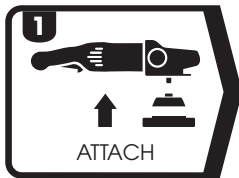


G Mop Flexible Back
Plate for 8" Pads
GMB814 (14mm thread)
GMB858 (5/8" thread)
GMB816 (16mm thread)

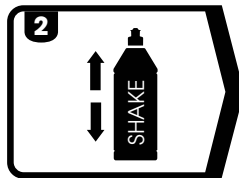


Farécla Finishing Cloth
FC-3 (3 x cloths)

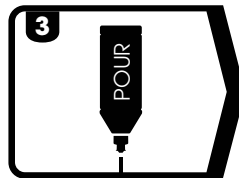
How To Use



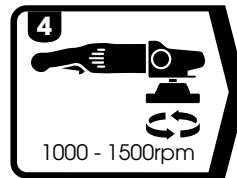
1
ATTACH
Attach a G Mop
6" Finishing Foam
to polishing
machine



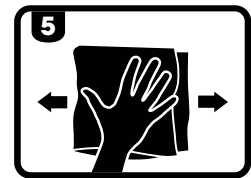
2
SHAKE
Shake bottle well
before use



3
POUR
Apply a small
amount of product
to surface or pad



4
1000 - 1500rpm
Compound at a
speed of 1000 -
1500rpm



5
Wipe clean with
Finishing Cloth

Technical Information

Appearance: **Blue coloured liquid**
Viscosity: **Medium viscosity**
VOC Content: **231g/L**
Relative Density: **1.050**
pH: **7 - 8**
Paint Type Compliance: **All paint types**